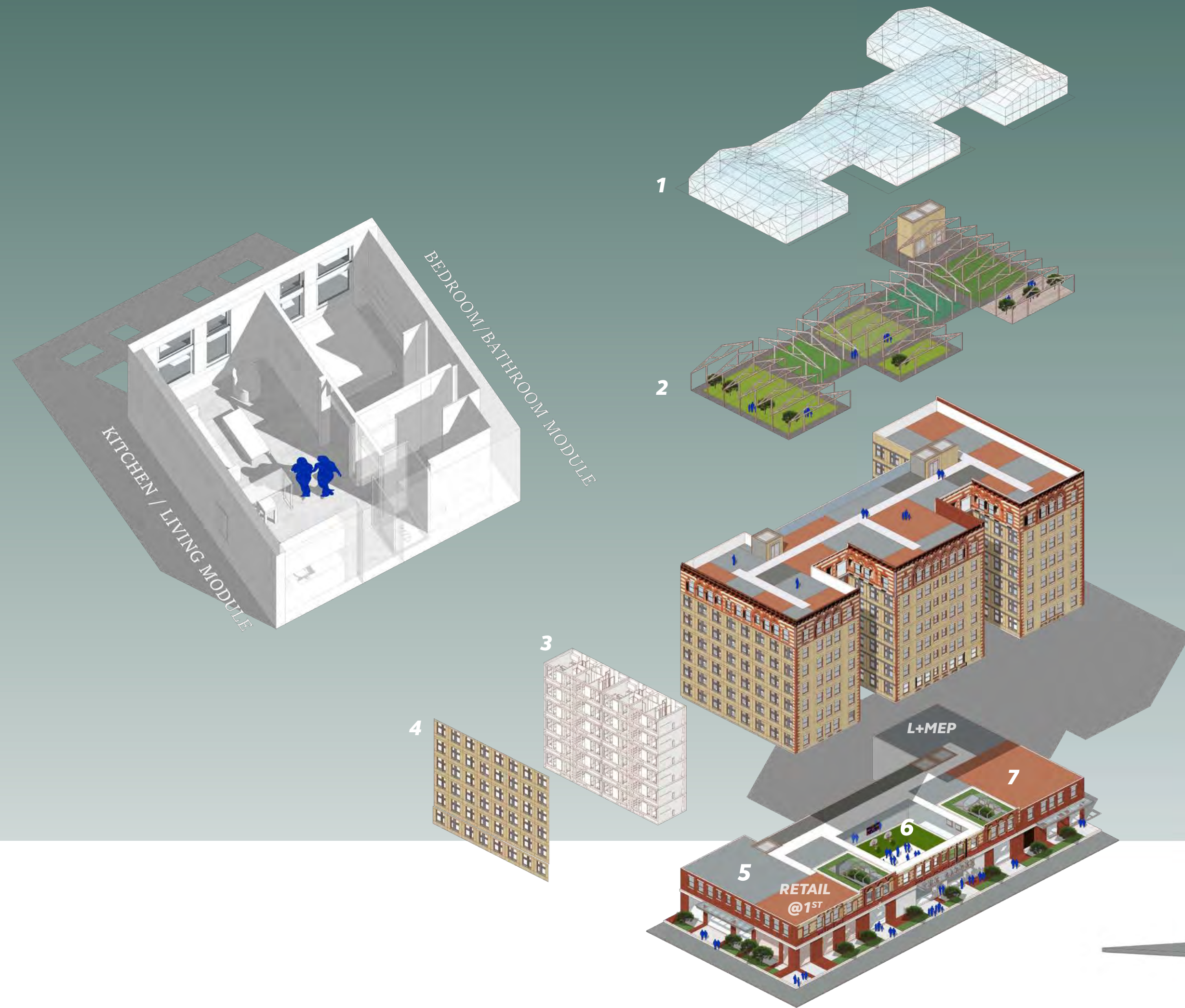


THE GARDEN

Nourishing the roots for new growth in West Garfield Park

In our proposal, we embrace the principles of Housing First, a comprehensive program that informs our design approach, making permanent housing a priority. We are guided by the belief that people need basic necessities, such as food and shelter before all else. In seeking an end to homelessness, we created a comprehensive platform for people to pursue their own goals while improving their quality of life. With stability, comes opportunity to improve personal health, gain an education, a rewarding job. We recognize the importance of client choice in selecting a place to live, combined with meaningful opportunities and support to foster significant steps in improving our clients' lives.



1. The Beacon

Glass house as a beacon of hope and change. Reposition the top of the building into a year-round glass-enclosed greenhouse for the residents



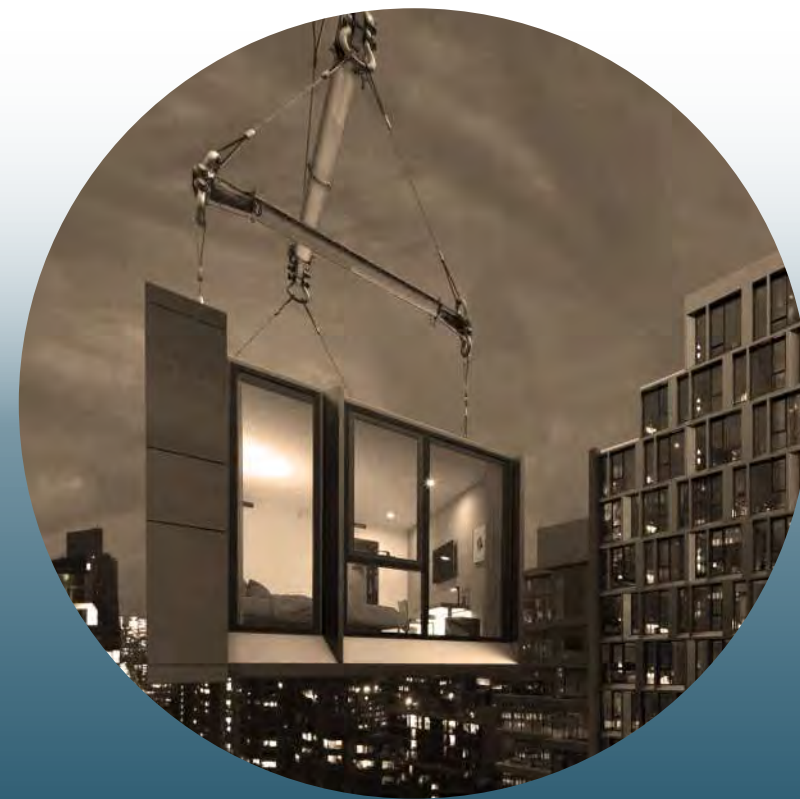
2. Microgreens & "Hands In the Soil"

Healthy mind and body. Residents grow and harvest organic micro green crops for markets and "locavore" restaurants



3. Micro-apartments

For the most vulnerable. Provide long-term, secure housing for women and children, ranging from Studios to 1 and 2 bedroom units



4. Prefabricated Modules

Efficiency and comfort. Skender Construction's prefabricated residential modules are passive energy-efficient, acoustically separate and sized to fit into the building's existing superstructure



5. Delivery & Distribution

Safe and secure. Residents operate a secure package distribution and fulfillment center, serving the greater community



6. Hoops and Backboards

Play space. Provide a safe space for after school / afterhours play for the residents and the community



7. The Dark Kitchen

Food and Jobs. Residents operate a food preparation kitchen that prepares and delivers orders for on-line only restaurants.