

LIVING WELL

healthy, affordable living & community revival

EQUITY

HUMAN-CENTERED DESIGN APPROACH

How do you ensure that houses will be lived in and not used solely as investment tools? How do we create cities that deliver quality of life for everyone? Communities need to hold on to what makes them unique. **Equality of life is a reflection of a successful city** - one that's inclusive and works for everyone. We want our design to provoke a larger community revival by showcasing the cultural and historic staples that already exist and providing a space for the community to engage, connect, and pursue a healthier lifestyle. Our goal has been, and continues to be, to establish partnerships with key local stakeholders and ensure, as best we can, that we are addressing the community's most pressing needs and concerns—and not our own.

\$28,416

TOTAL ANNUAL AVERAGE COST OF LIVING IN DC
FOR DC MIN. WAGE EMPLOYEE
TO AFFORD TO RENT A 2 BR HOME
DC MIN. HOURLY WAGE: \$9.25

132+

HOURS PER WEEK
FOR DC MIN. WAGE EMPLOYEE
TO AFFORD TO RENT A 2 BR HOME
DC MIN. HOURLY WAGE: \$9.25

"I would like to see more trees on my walk to the metro."
Future Community Leader, Age 13

45 trees
planned

"We want an **arts hub** with galleries, performance space, a coffee shop or a bookstore... like Busboys and Poets."
Current Resident



phase II community pavilion to be used for social engagement, culture activities and cross-generational mentoring

MATERIALS



Main Materials

CONCRETE

Titan Ready-Mix Concrete, Norfolk, VA
Silka Concrete Admixture, Lyndhurst, NJ
Allied Concrete Products CMU, Chesapeake, VA
Lehigh Cement Mortar, Union Bridge, MD

WOOD

Hoover Southern Yellow Pine, Thomson, GA
Roy O. Martin Plywood, Alexandria, LA
Reclaimed Wood, Washington, DC

METAL

CMC Steel Rebar, Fredericksburg, VA
Metal Sales Galvalume Panels, Deer Lake, PA

INSULATION

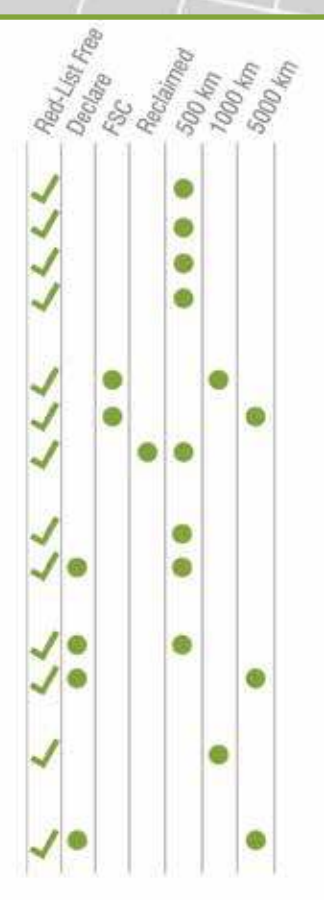
GreenFiber Cellulose, Hagaman, NY
FOAMGLAS Rigid, Sedalia, MO

ROOF

Firestone EPDM Flooring, Indianapolis, IN

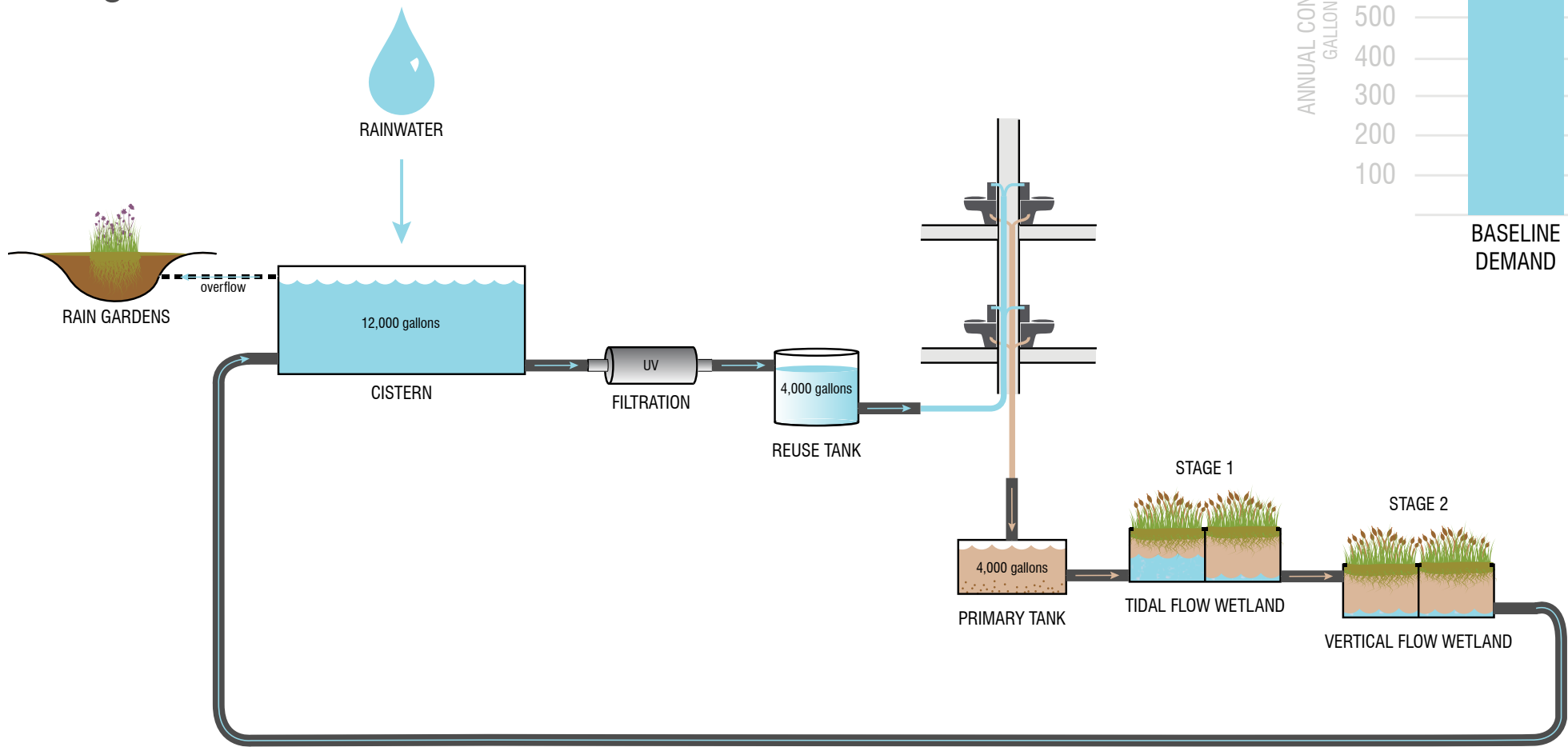
WINDOWS

Cascadia 300 Series Windows, Langley, BC

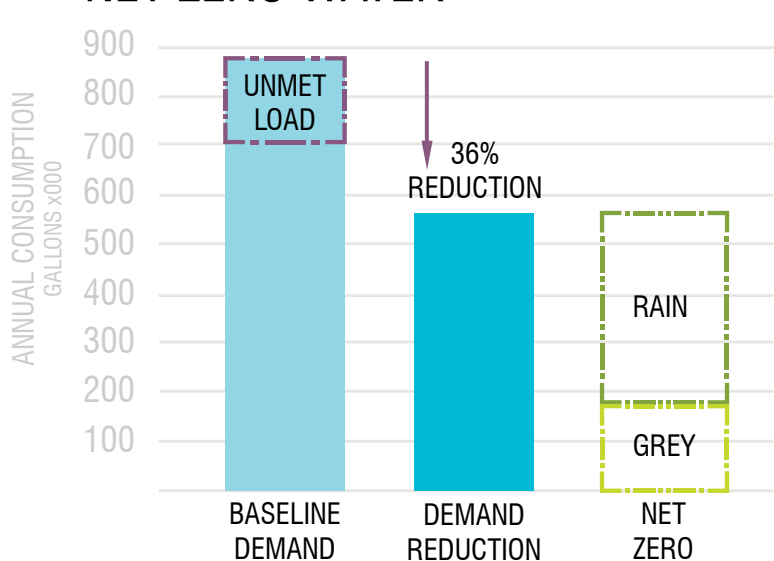


WATER

Living Machine

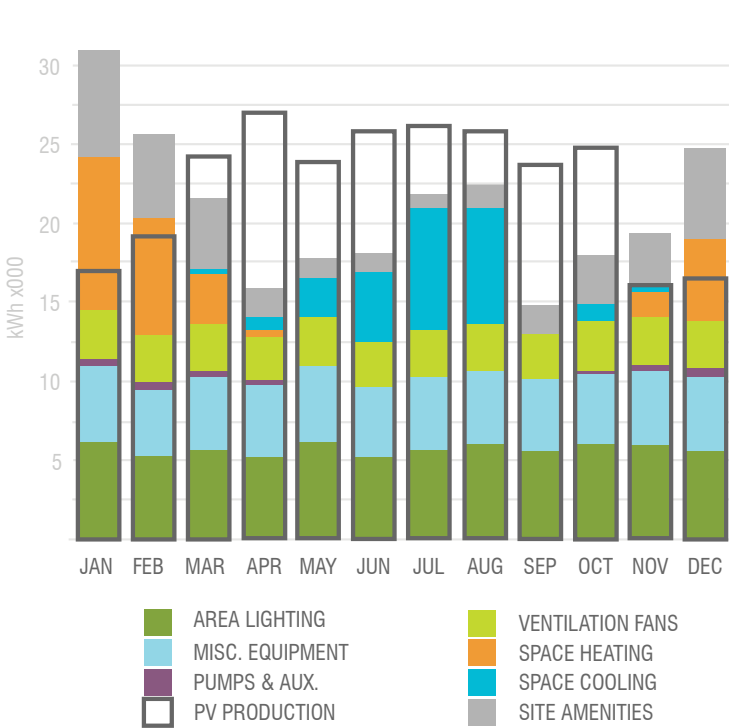


NET ZERO WATER

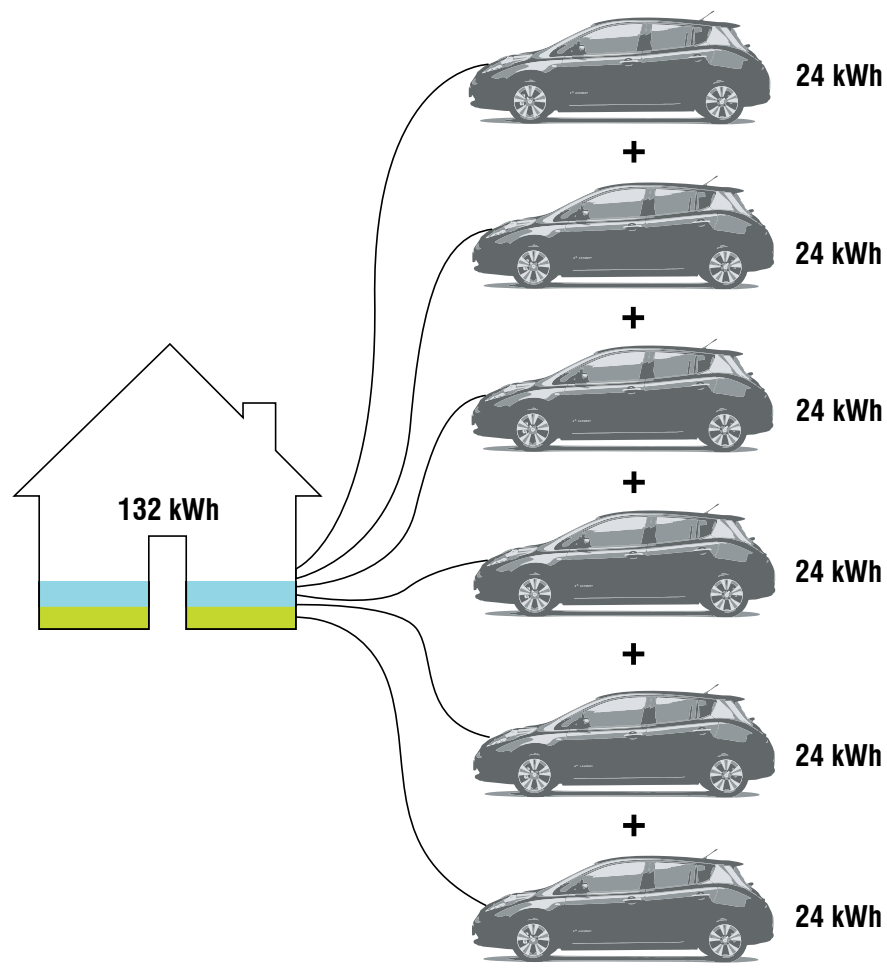
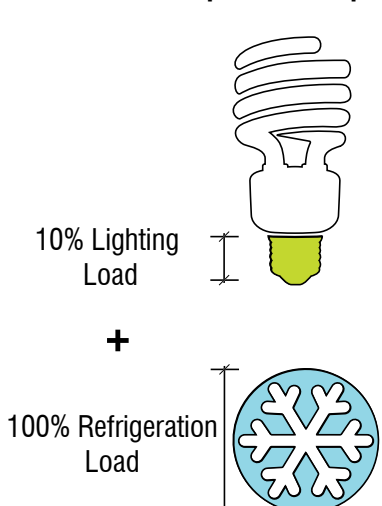


ENERGY

ELECTRIC CONSUMPTION & PRODUCTION

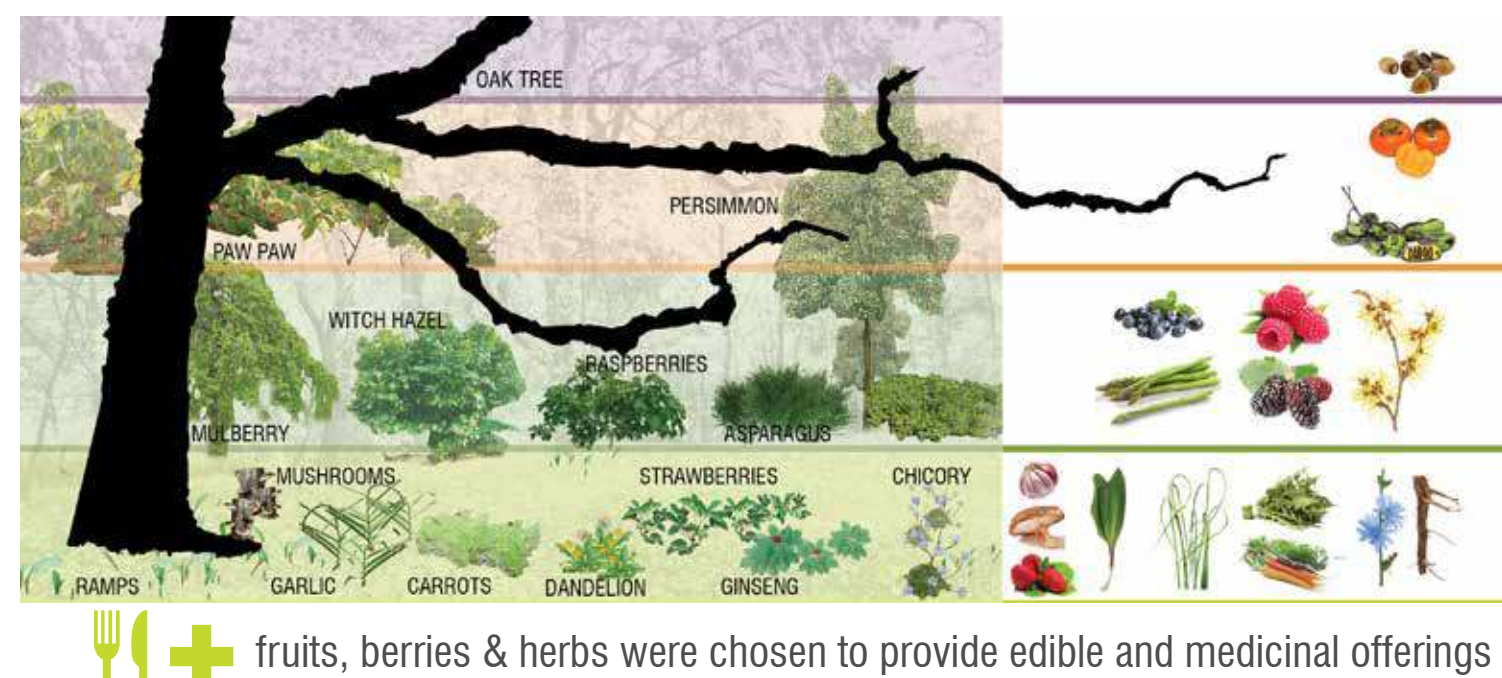


Required Backup Power

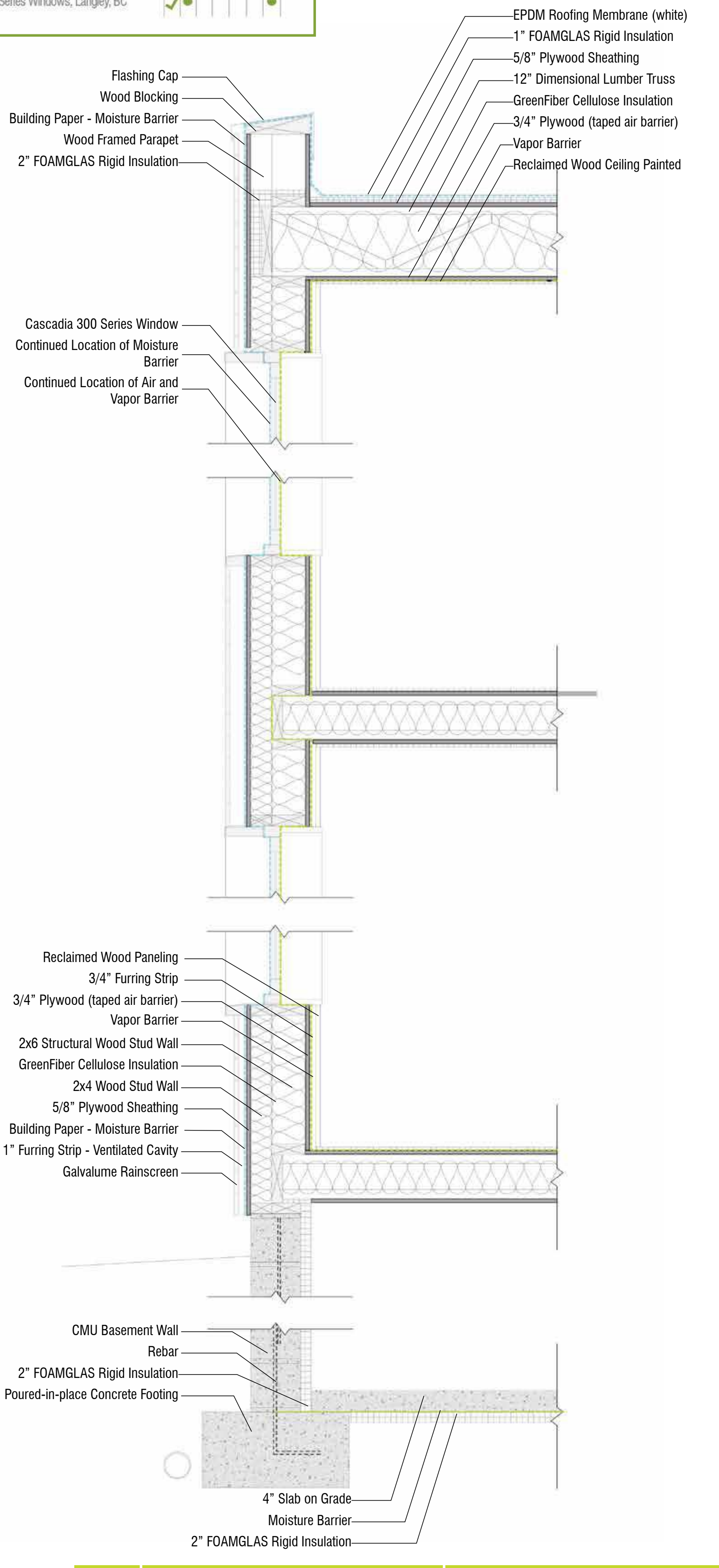
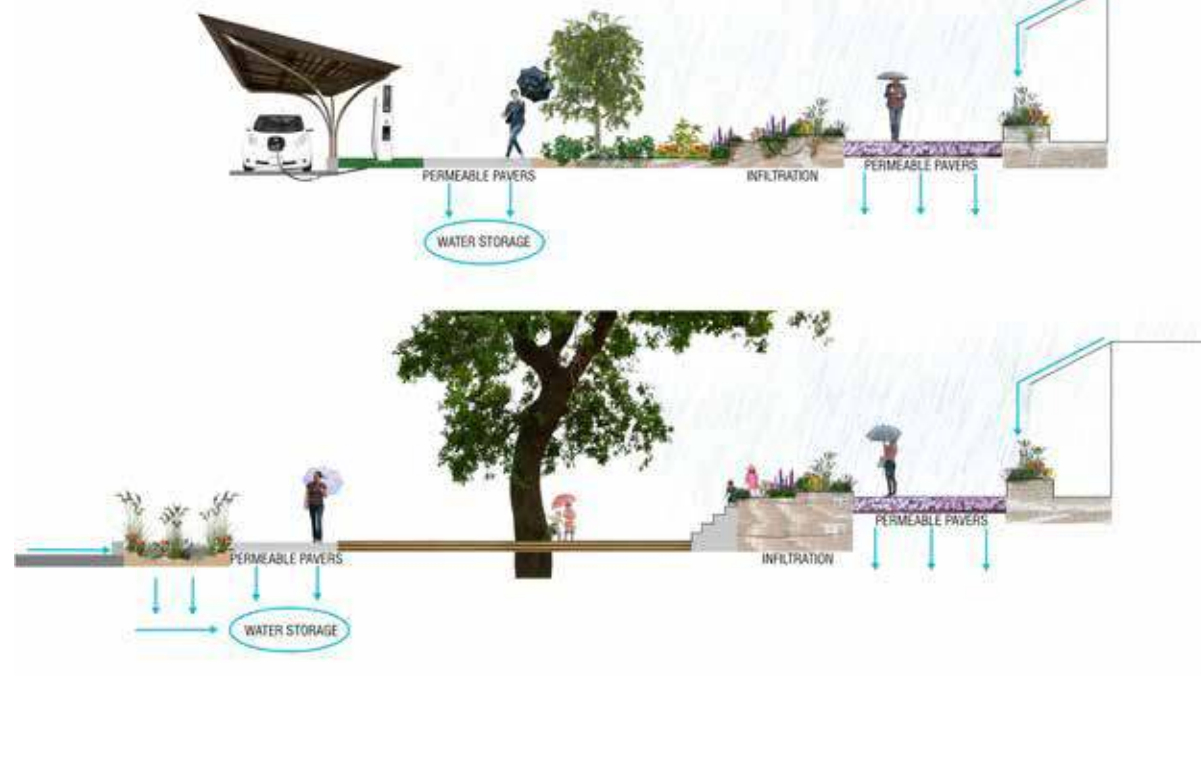


HEALTH & HAPPINESS

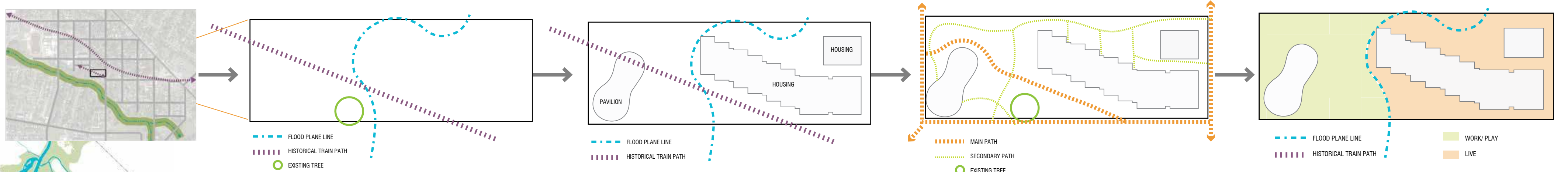
Forest Garden



fruits, berries & herbs were chosen to provide edible and medicinal offerings



<p>1864</p> <p>1864 Ward 7's first school for African American's opens on Benning Road. Two years after DC emancipates enslaved people.</p>	<p>1895</p> <p>1895 Community transforms from a racially-mixed, working-class population to a majority African American community.</p>	<p>1900</p> <p>1900 National Training School for Women and Girls founded by Nannie Helen Burroughs opens. Becoming one of the first vocational boarding school for minority women and advocated for women's rights, civil rights, and religious freedom.</p>	<p>1920</p> <p>1920 By the early 1920's, many residents took the train and streetcar into the city and to jobs at the Navy Yard. The first rail-line through Deanwood was built in 1871 by Southern Maryland Railroad.</p>	<p>1921</p> <p>1921 Suburban Gardens Amusement Park opens, built by an African American-owned developer; it's the first and only of it's kind in DC and provides recreational entertainment and employment for residents barred from other white-owned parks due to racial segregation.</p>	<p>1938</p> <p>1938 The U.S. government establishes flood control measures to Watt's Branch 1.6 mile-long park providing a place for residents to use and enjoy.</p>	<p>1940-1950</p> <p>1940-1950 The Northeast Boundary Civic Association and community members convince city officials to provide paved roads, street-lighting, and support building projects.</p>	<p>1950</p> <p>1950 Nannie Helen Burroughs Avenue becomes a prominent commercial corridor owned and operated by local African Americans residents. Some businesses still operate today.</p>
--	---	---	---	--	---	---	--



PLACE

Living Machine
education & conservation

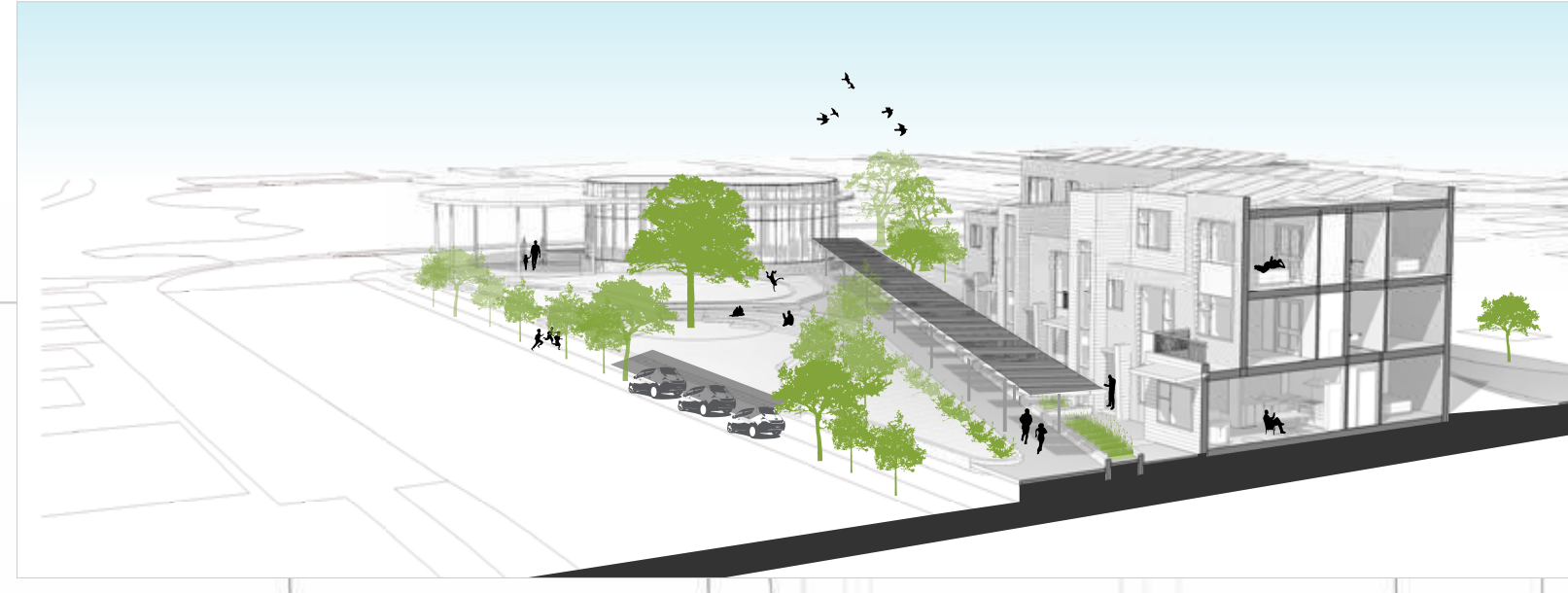
Forest Farm
nourishment, community & education

Residential Gardens
private & semi-private outdoor space

Walking Trail
connectivity & health

Community Pavilion & Plaza
social/leisure gathering space

Electric Car Share & Charging Station
community & environment



- | | |
|---|--|
| <p>Type A</p> <ul style="list-style-type: none"> 3 levels 4 bed / 3 bath flexible room on ground level - can be used as study room or in-law suite private porch | <p>Type B</p> <ul style="list-style-type: none"> 3 levels 1 BR apt. on ground 2 bed / 2 bath above levels terrace |
| <p>Type C</p> <ul style="list-style-type: none"> 2 levels 3 bed / 3 bath flexible room on ground level - can be used as study room or in-law suite private porch | <p>Type D</p> <ul style="list-style-type: none"> 3 levels 3 bed / 3 bath flexible space on level 2 private porch |

BEAUTY



"We need to establish partnerships for funding with local nonprofits and community-focused organizations."
Current Resident



NEXT STEPS

- Community Feedback & Engagement
- Education & Resources // Standards Development For Maintaining Living Systems
- Phase II Implementation Strategy (Local Partnerships, Crowdsourcing Ideas, Fundrise)



rtkl.com/you-are-here
rtkl-dc-lbc-competition.tumblr.com

<p>1960</p> <p>1965 Committee for a More Beautiful Capital by Lady Bird Johnson begins a massive clean-up of Watt's Branch Park.</p>	<p>1970</p>	<p>1980</p> <p>1987 "Humanity has the ability to make development sustainable to ensure that it meets the needs of the present without compromising the ability of future generations to meet their own needs." World Commission on Environment and Development, <i>Our Common Future</i></p>	<p>1990</p>	<p>2000</p>	<p>2010</p>	<p>2020</p>
--	--------------------	---	--------------------	--------------------	--------------------	--------------------